

The Adderley Post

Arden Road, Saltley, Birmingham B8 1DZ • 0121 464 1500
www.adderleyprimary.co.uk • @adderleyschool

COVID 19 Outbreak Management

As part of our contingency plan in response to the COVID 19 Omicron outbreak, we would like our parents to know that the school is facing a staff shortage at the moment. We have introduced flexible approaches to ensure that your child receives their education at school, including the merging classes into larger groups. Our aim is to keep classes open as much as possible, however, if the school cannot staff the classes due to teachers isolating, we may need to revert to teaching remotely for some classes in the short term.

We will ensure that children are able to access their lessons at home on Purple Mash or via MS Teams if we need to close any classes. Please note that this will be the last option if we do not have the capacity to remain open. We will endeavour to remain open and maximise on-site education where staffing allows.

Thank you all for your continued support. Your child's education is always a priority.

COVID 19 Guidance

We continue to have confirmed cases of COVID 19 among our school population and further known cases in the community. If your child is showing any of the following symptoms:

- New continuous cough
- High temperature
- Changes to taste and/or smell

Please keep them at home and carry out an LFD test, you can book them in for a PCR test (this is currently optional) and inform the school office if they have tested positive. You will find the most up to date COVID 19 guidance for households here:



<https://www.gov.uk/government/publications/covid-19-stay-at-home-guidance/stay-at-home-guidance-for-households-with-possible-coronavirus-covid-19-infection>

DATES FOR YOUR DIARY

Last Day of Half Term
Friday 18th February 2022

School Re-opens
Monday 28th February 2022

10 TOP TIPS FOR CHILDREN

Remote education ensures continuous learning outside the classroom. For students, it's the perfect way to ensure they still get the education they need, despite not being at school. However, it also requires a level of discipline and careful planning. That's why we've created this guide to help pupils understand different aspects of remote education and to support them in ensuring their experience is as safe and secure as it can be.

1. TREAT REMOTE EDUCATION THE SAME AS CLASSROOM LEARNING

Despite being at home, it's important to remember the same rules apply as being in the classroom, particularly in respect of behavior and conduct. Focus on learning and don't get distracted by your surroundings.



2. USE CLASSROOM LANGUAGE

If you are encouraged to communicate through emails and online messages, don't use shorthand text speak and write as though you would speak in class. Remember to be respectful and polite and avoid posting negative comments or spamming the chat.



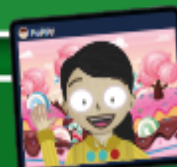
3. TAKE REGULAR SCREEN BREAKS

Whilst remote education might be an exciting experience to begin with, having prolonged periods of time in front of a screen isn't always healthy. Remember to have regular screen breaks where possible and in your spare time, try to get some fresh air and enjoy other activities away from electronic devices.



4. ALWAYS CONDUCT VIDEO LEARNING IN AN OPEN SPACE AT HOME

To get the best experience from remote education, it's important to create the right environment around you. Try to set up a 'mock classroom desk' at home in an open space so parents can supervise if necessary. Avoid bedrooms as this could be considered inappropriate.



5. ONLY COMMUNICATE THROUGH APPROVED SCHOOL PORTALS AND PLATFORMS

It's important that you send messages and any pictures or images required for class through approved school channels, such as internal learning portals or approved platforms. This will help to keep your personal information safe and secure.



6. STICK TO TEACHER RULES AND GUIDELINES AROUND REMOTE EDUCATION

Your school should issue you with guidance on remote education and the rules to follow. Always maintain classroom behaviour and try to remember that you are in a learning environment and not a social setting.



7. DRESS IN SCHOOL UNIFORM

As part of your learning environment, try to maintain school uniform/dress. This will help as part of replicating classroom learning in the home. Try to avoid wearing anything too casual as this could be deemed inappropriate for school.



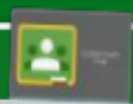
8. DON'T SHARE PASSWORDS OR OTHER SENSITIVE INFORMATION

In order to begin your online lessons or to gain access to learning materials, you may be provided with login details and passwords. In the same way you keep your personal details private, always keep these safe and never share them with others.



9. DON'T USE SCHOOL PLATFORMS TO DISCUSS PERSONAL MATTERS.

It's important to keep your school communication channels separate from your own personal communication with friends and family. Don't be tempted to engage in casual discussions or send images, videos or links via official school apps or platforms that aren't associated with your learning.



10. LOOK AFTER YOUR MENTAL HEALTH AND WELLBEING.

Remote education ultimately means working alone and missing out on daily social interaction with your friends. If you ever feel frustrated, low or sad, it's important to discuss how you feel with your parents or your teacher. Keeping in touch with friends over the phone or on social media can also help to keep your spirits up.

